

Pictometry[®] Desktop GIS Uploader Guide

July 2014



Copyright © 2014 Pictometry International Corp. All rights reserved.

No part of this publication may be reproduced, stored in a retrieval system or transmitted, in any form or by any means, electronic or mechanical, including photocopying, recording, or otherwise, without the prior written permission of Pictometry International Corporation.

Pictometry® is a trademark of Pictometry International Corp. Windows® is a registered trademark of Microsoft® Corporation. All other brands or products are the trademarks or registered trademarks of their respective holders.

Pictometry International Corporation
100 Town Centre Drive
Rochester, NY 14623

Printed in the United States of America

Documentation for Uploader version 1.0

July 2014

Contents

Introduction.....	1
Overview.....	1
What types of files can you upload?	1
Supported coordinate systems	1
Ways to upload data	1
Manual method	1
Configuration file method.....	1
The upload process.....	2
What if the server contains a file with the same name?	2
After uploading	2
Command line execution	2
Installing the Uploader.....	2
Before installing the Uploader	2
Installation procedure.....	3
Opening the Uploader	3
Uploading layers.....	4
Uploading layers manually	4
Uploading layers from a configuration file.....	7
What's next?	9
Creating and maintaining configuration files	9
Maintaining uploaded data	10
Updating layers	10
Deleting layers	10
Running the Uploader from a command line.....	10
command-line syntax.....	10
Unattended uploading.....	10

Introduction

In order to make your GIS data available to use with your Pictometry applications, you must first upload it to Pictometry servers. Pictometry's Desktop GIS Uploader is a desktop application that allows you to upload your GIS data directly to the Pictometry Hosting Service so it can be configured and used by your CONNECT account.

This document provides an overview of the Pictometry Desktop GIS Uploader for Parent and Organization Administrators.

Overview

What types of files can you upload?

You can upload data from ESRI shapefiles. The folder where you store the shapefiles to upload must contain all four files (.shp, .shx, .dbf, and .prj) for each shapefile. When you select the file to upload, you'll select only the .shp file, but the Uploader uploads the entire shapefile.

Supported coordinate systems

The Uploader supports most coordinate systems listed at <http://spatialreference.org/> that have an "EPSG:" or "ESRI:" prefix. If you have shapefiles projected in non-standard, custom state coordinate systems, you will be required to re-project them into a standard coordinate system, such as WGS84 Lat/Lon, in order for them to be uploaded.

Ways to upload data

The Pictometry Desktop GIS Uploader is an interactive application that provides two ways to upload data to Pictometry's Hosting Service:

- By manually selecting the information needed to upload your data. (With this method, you'll log in to your CONNECT account first.)
- By selecting a configuration file that contains the information needed to upload the data.

Manual method

The first time you upload a particular set of data, you'll use the manual method. After completing a manual upload, you'll have the option of creating a configuration file that you can use to repeat that data upload later if you wish. If you choose, you can continue using the manual method to update layers. The two methods are interchangeable.

NOTE: When you log in with your CONNECT credentials, the Uploader checks to see which layers your organization has already uploaded so you can update a layer with new data or update its database schema if fields have been added, removed, or changed.

Configuration file method

Instead of manually logging in, you can select a configuration file from the list of configuration files you previously created. From there, one click starts the upload.

Installing the Uploader

The upload process

Uploading GIS data involves these main steps:

- **File transfer and verification.** You upload the data files to Pictometry's server. The Uploader verifies several things, such as whether the data already exists on the Pictometry server (because it was uploaded previously) and whether all files that comprise the shapefile are present.
- **Layer processing.** The Uploader processes the files (makes them ready to configure and moves them to the applicable Pictometry server).

NOTE: The Uploader uses a secure ssl connection to the Pictometry server.

What if the server contains a file with the same name?

When the Uploader performs its verification, it checks if the Pictometry server already contains a layer with the same name as the one you are currently uploading. If it finds one, it overwrites the existing layer.

If the new layer has the same schema (attribute column names) as the existing one, the GIS data will be updated without affecting configured searches (text and geocode) and display fields. However, if attribute column names that were previously configured for searches or display are different in the new layer, those searches and data displays will no longer work until you reconfigure the layer after it is processed.

After uploading

After uploading, your GIS data are listed in CONNECTAdmin where you'll configure them as layers.

Command line execution

Alternatively, you can upload a shapefile by running the Desktop Uploader from a Command Prompt window instead of opening its application interface. (For more information, see "Running the Uploader from a command line" on page 10.)

Installing the Uploader

This topic provides instructions for installing the Pictometry Desktop GIS Uploader. To download the Pictometry Desktop GIS Uploader from CONNECTAdmin, select **Upload Your GIS Data** from the **GIS** menu. Then click **Download Desktop GIS Uploader**.

NOTE: To view credentials for the Desktop GIS Uploader, click **Details** (above the "Download Desktop GIS Uploader" button on the "Upload Your GIS Data" page).

Before installing the Uploader ...

Make sure the following requirements are met:

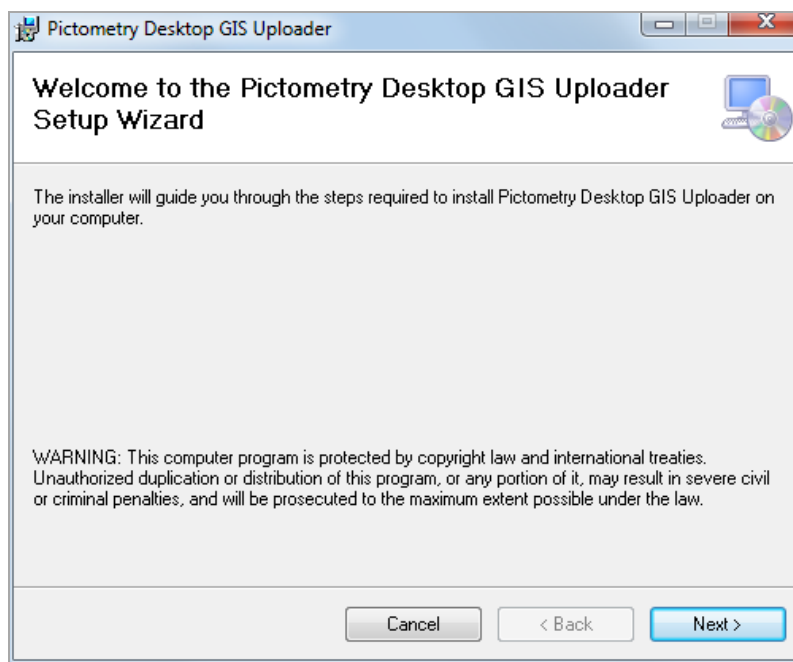
- Your system has a minimum of 256 MB of RAM.
- A CONNECT user account has already been created for you. A CONNECT user account includes a user name (an email address), plus a password.

Opening the Uploader

Installation procedure

To install the Uploader:

1. Open the folder where you downloaded the install file.
2. Double-click **PictometryDesktopGISUploaderSetup.exe**. An installation wizard opens.



3. Click **Next** and follow the on-screen instructions.
4. On the Installation Complete window, click **Close**.

The installation wizard creates a desktop shortcut for the Desktop Uploader.

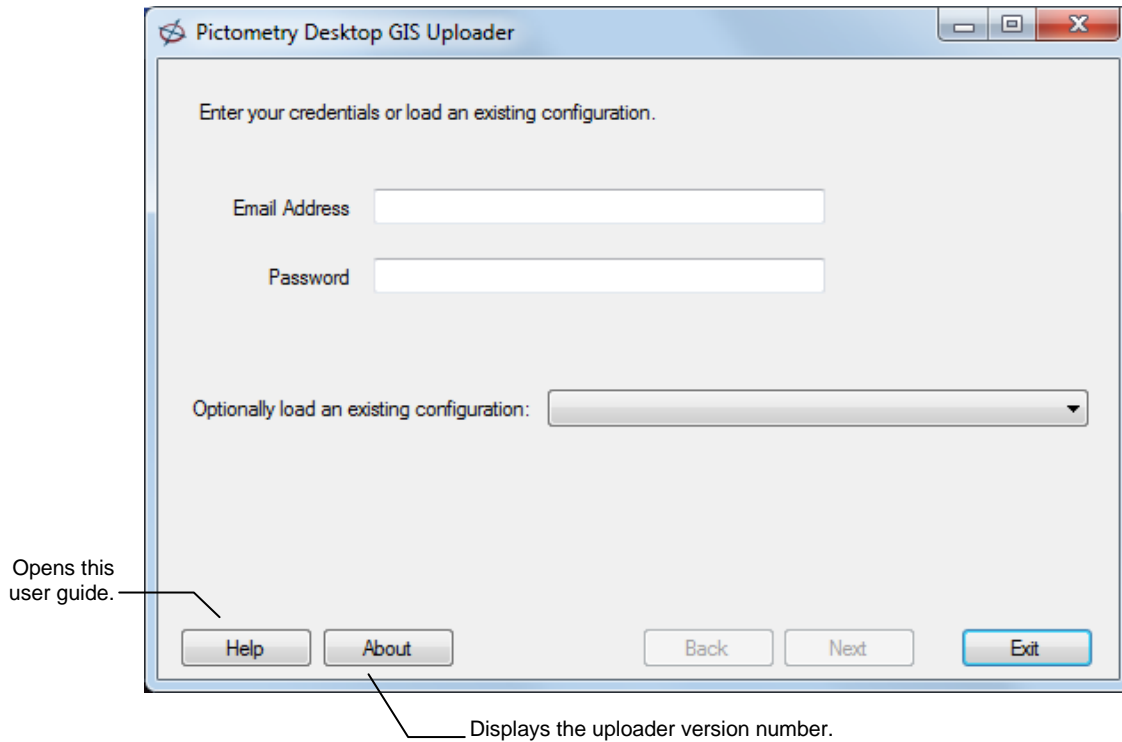
Opening the Uploader

To open the Uploader:

1. Double-click the desktop shortcut for the Desktop Uploader.

Uploading layers

The Uploader's main window opens.



From this window, you can do either of the following tasks:

- Upload layers manually. See “Uploading layers manually” — the next topic.
- Upload a layer by selecting a configuration file. See “Uploading layers from a configuration file” on page 7.

Uploading layers

Uploading layers manually

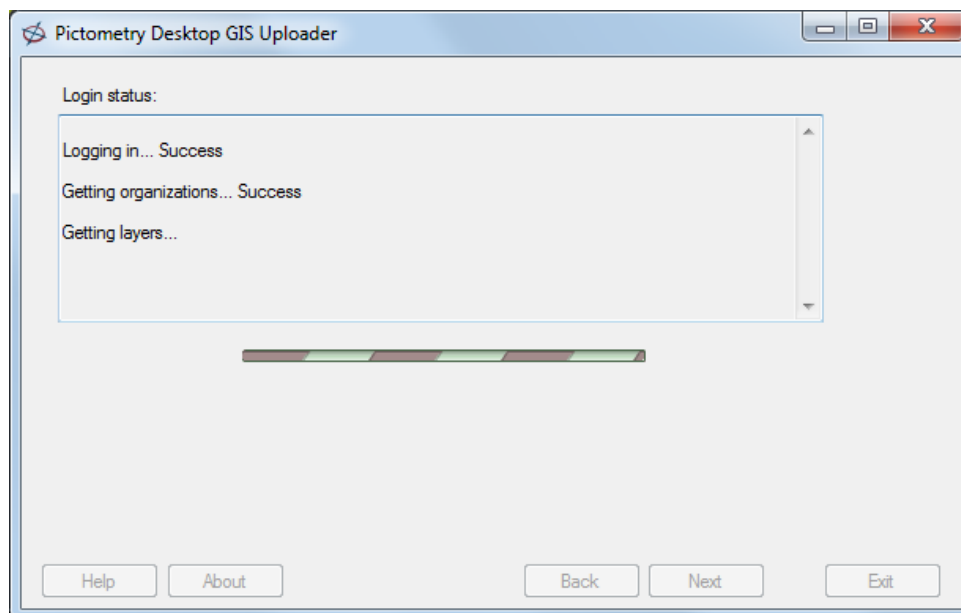
When you upload a layer manually, you'll select your organization name and the path to the shapefile you want to upload. After the file transfer is complete, you'll have the option of saving what you entered as a configuration file. Typically you'll upload manually the first time you upload a GIS data set so you can select the upload parameters to store in a configuration file.

To upload layers manually:

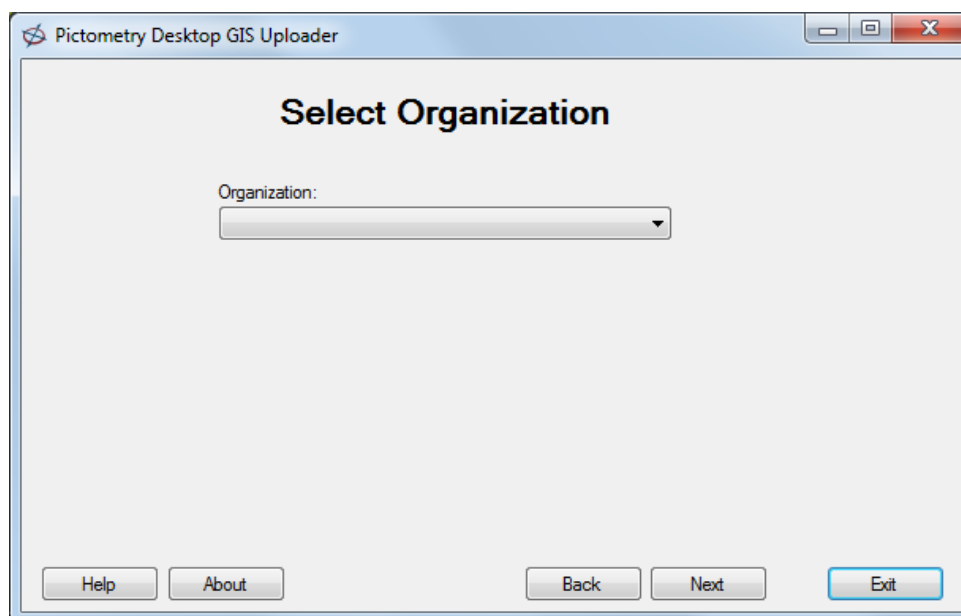
1. Open the Uploader, enter your CONNECT credentials in the **Email Address** and **Password** fields, and click **Next**.

The following window appears briefly while the Uploader logs you in and retrieves your organization's existing layers.

Uploading layers



Once you are successfully logged in, the following window appears.



2. From the organization list, select the organization you want to upload the data to.
3. Click **Next**. The following window opens.

Uploading layers



4. Click **Browse** and select the shp file for the shapefile you want to upload. Click **Open**.

NOTE: Although you'll select only the file with the ".shp" extension, the folder where you store the shapefile must contain all four files that comprise that shapefile (.shp, .shx, .dbf, .prj).

If one or more files are missing from the folder, the Uploader indicates which file is missing.

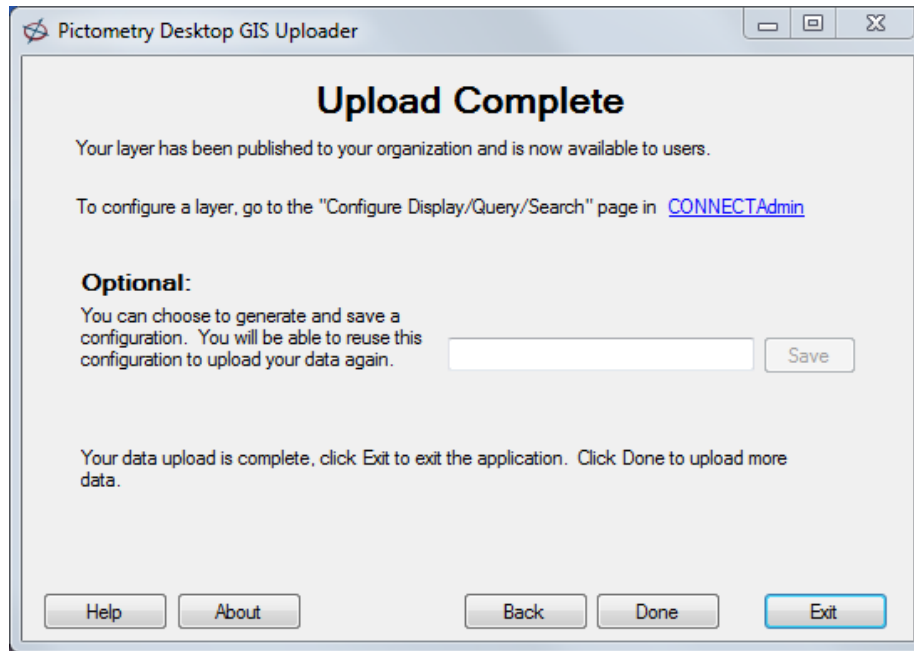
Verifying all the files exist... Failed verifying shape files
Error - Missing shx file
Upload aborted

IMPORTANT: To replace a layer previously uploaded, make sure the file name is identical to the original.

5. Click **Next** to start the file transfer. You'll see several status messages appear while the file is transferred and processed. Depending on the size of the shapefile you are uploading, this could take several minutes.

When the upload is complete, the following window appears.

Uploading layers



6. Use the following chart to determine your next step.

To ...	Do this ...
Exit the application after the upload has completed	Click Exit .
Upload more data	Click Done and repeat this procedure for each shapefile you want to upload.
Save the upload information you selected as a configuration file so you can update the GIS data later	Type a name for the configuration file, and click Save . (See "Creating and maintaining configuration files" on page 9 for more details.)
Open CONNECTAdmin so you can configure the uploaded data	Click the link to CONNECTAdmin . (For more information, see "What's next?" on page 9.)

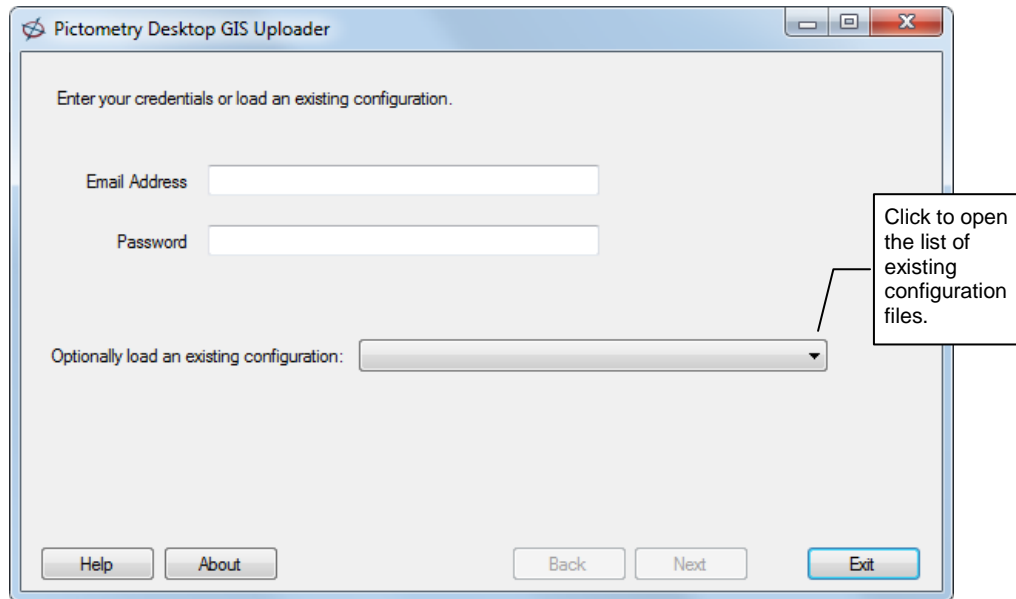
Uploading layers from a configuration file

If you previously created a configuration file that contains the parameters needed to upload a layer, you can load it and upload the data based on the saved configuration.

To upload layers from a configuration file:

1. Open the Uploader, but do not log in.

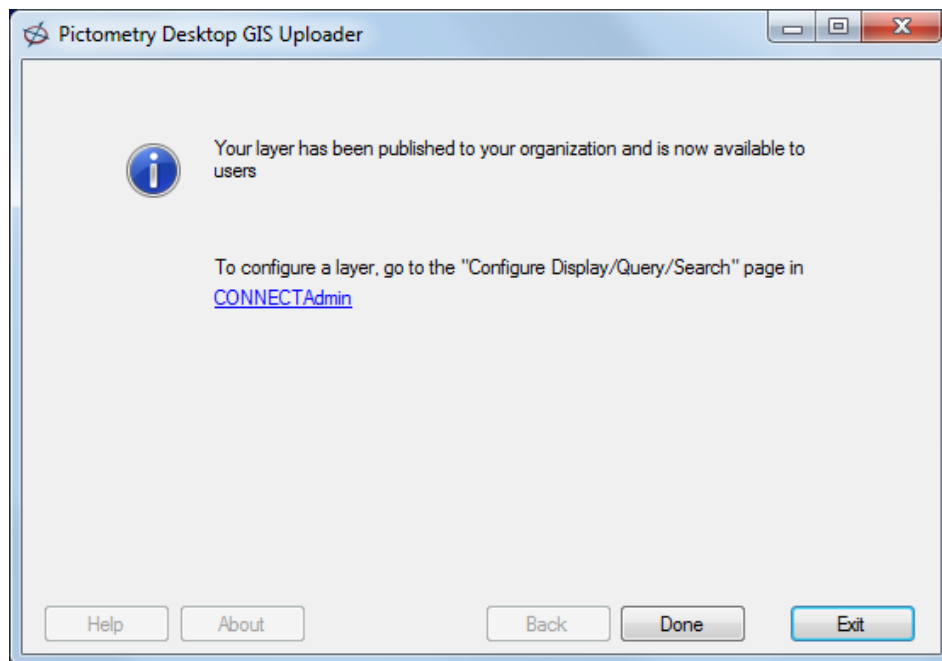
Uploading layers



2. From the list of existing configurations, select the configuration file you want to use.
3. Click **Next** to start the file transfer.

You'll see several status messages appear while the file is transferred and processed. Depending on the size of the shapefile you are uploading, this could take several minutes.

When the upload is complete, the following window appears.



4. Click **Done** to return to the Uploader's main window.

Creating and maintaining configuration files

What's next?

Once you've uploaded your files they are listed on the "Upload Your GIS Data" page in CONNECTAdmin. If you want to change the appearance of an uploaded layer or if you want to search on that layer, you'll need to use CONNECTAdmin to configure it.

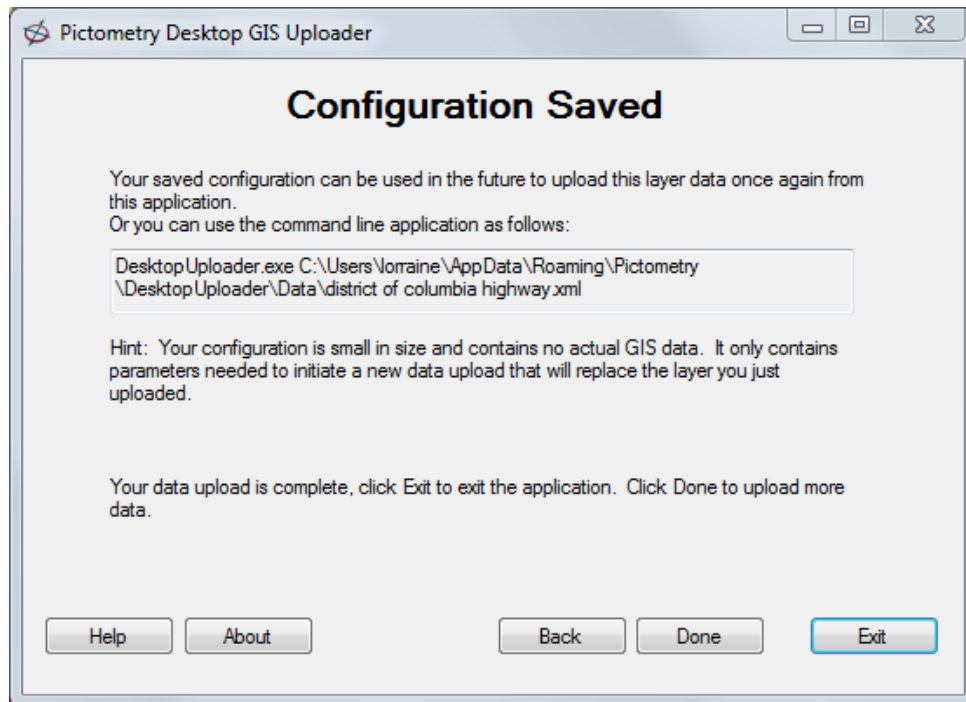
Creating and maintaining configuration files

After entering the information required to manually upload an ESRI shapefile, you can save that information as a configuration file, which you can use later to upload your data again. The GIS data is not saved in a configuration file, only the upload parameters are saved.

To create a configuration file for a GIS layer, you must first successfully upload the file manually one time.

To upload layers from a configuration file:

1. Open the Uploader and log in with your CONNECT credentials.
2. Upload the file manually once. (See "Uploading layers manually.")
3. After successfully uploading the file, on the Upload Complete window, type a name for the configuration file, and click **Save**. The following confirmation window opens.



4. Click **Exit** to exit the Uploader, or **Done** to upload more data.

Maintaining uploaded data

Updating layers

With the Desktop Uploader you can easily replace a layer that was previously uploaded simply by uploading the new file (manually or with a configuration file). However, the new files must have the same file names as the original files you uploaded.

Example:

Suppose you have data in a file called “countyLightposts.shp” and you upload this data to Pictometry. And suppose that a month later you have new data. You can upload this new data and completely replace the original data as long as its file names are the same as the original files — “countyLightposts.shp” (shx, dbf, and prj). If the updated files are named differently, then you can copy them and name the copies the same as the original files. When you upload them, they will automatically update the original data files on Pictometry’s servers. When you upload your data the first time, keep updates in mind and choose your first file name carefully.

TIP: To save time, save the parameters as a configuration file after uploading the files, then use the configuration file to upload the file updates.

You will not need to reconfigure your layer in CONNECTAdmin unless the database schema has changed.

Deleting layers

If you wish to delete any layers you previously uploaded, you’ll need to use CONNECTAdmin. For information and instructions, see “Deleting uploaded GIS data” in the CONNECTAdmin help system or user guide.

Running the Uploader from a command line

If you wish, you can upload a shapefile by running the Desktop Uploader from a Command Prompt window instead of opening its application interface. You’ll need to enter the path and name of the configuration file as command-line parameters.

command-line syntax

```
DesktopUploader.exe <config file path>\config file name.xml>
```

This command uploads the configuration file specified in the command as if you had selected the configuration file from the Desktop Uploader’s main window.

Unattended uploading

By creating a script file that includes one or more commands, you can automate uploads that might need to occur periodically and at a certain time of day.